



POWERED BY
ROSIE MARLOW **exp** **UK**

@ rosie.marlow@exp.uk.com

rosiemarlow.exp.uk.com

01225 941 008

St. Ladoc Road, Keynsham, Bristol, BS31 2DR

£400,000

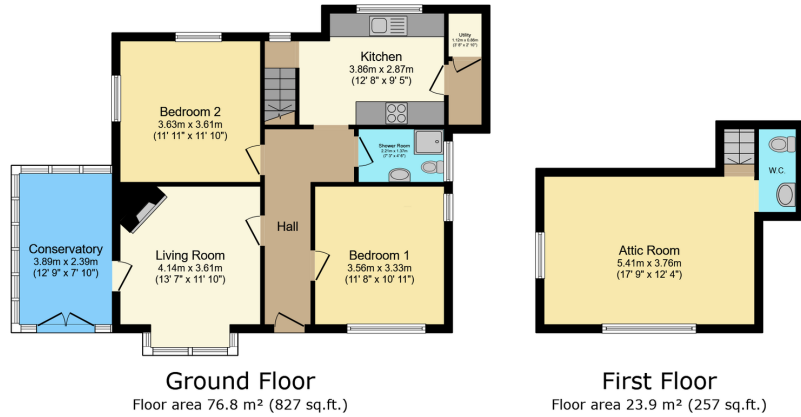
🛏️ 2 🍽️ 2 🚿 1



This attractive detached bungalow sits within a secluded corner plot and offers versatile accommodation. The ground floor consists of an entrance hallway, a lounge with feature fireplace and direct access to a delightful conservatory, two double bedrooms, a fitted kitchen and a shower room. To the first floor you will find a generous loft room (with built in wardrobe and ensuite WC) which is currently being utilised as an occasional bedroom. Externally the property sits within mature gardens, with the front enjoying a good sized lawn, a patio and raised decking ideal for al fresco dining. The rear of the garden is predominantly laid to block paving that provides off street parking for several vehicles in addition to a single garage and storage shed.

The property is located within close proximity to Keynsham High Street with its plethora of shops, cafes, bars and restaurants, 6.6 miles from Bristol and 8.6 miles from Bath. Keynsham is a medieval market town and is home to a Memorial Park, which is used for the annual town festival and several nature reserves. The town is served by Keynsham railway station. There are schools, religious, sporting, and cultural clubs and venues.





TOTAL: 100.6 m² (1,083 sq.ft.)
This floor plan is for illustrative purposes only. It is not drawn to scale. Any measurements, floor areas (including any total floor area), openings and orientations are approximate. No details are guaranteed, they cannot be relied upon for any purpose and do not form any part of any agreement. No liability is taken for any error, omission or misstatement. A party must rely upon its own inspection(s). Powered by www.Propertybox.co

- Please Quote Reference RM0334
- Sitting Room
- Two Bedrooms
- Attic Room with Ensuite
- Garden
- Detached Bungalow
- Kitchen
- Shower Room
- Conservatory
- Garage & Off Street Parking for several Vehicles

